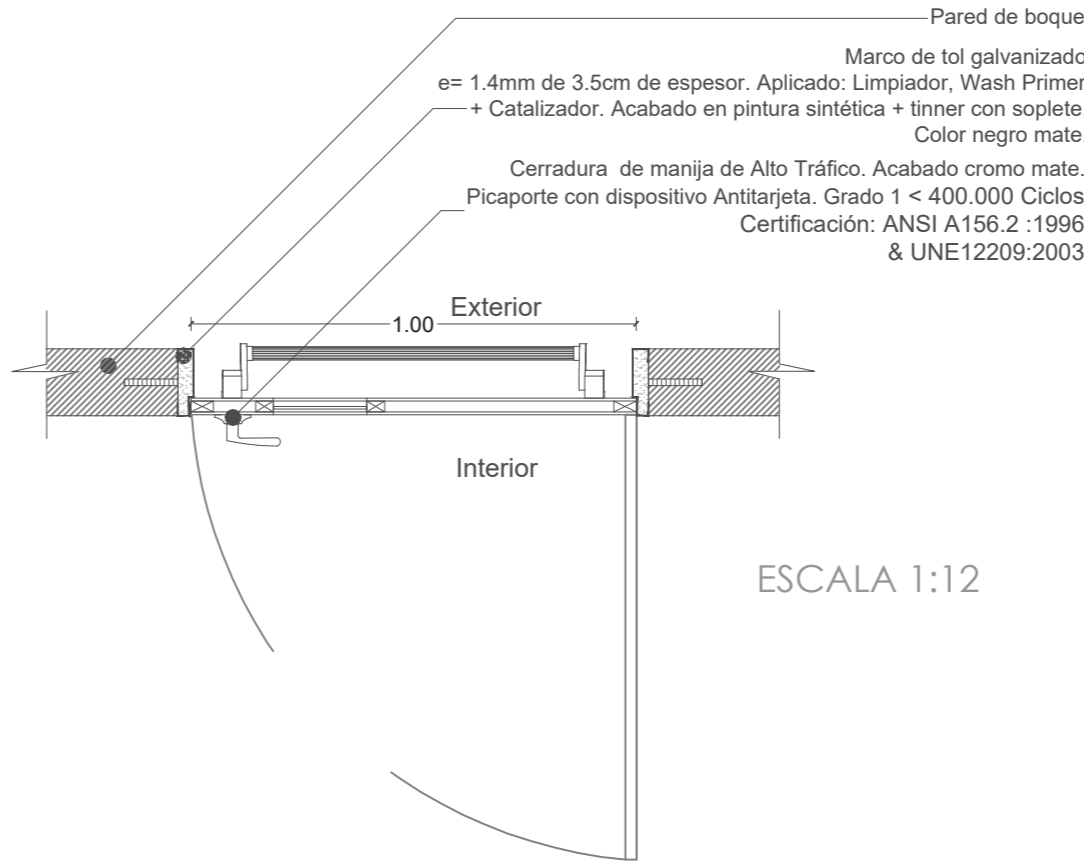
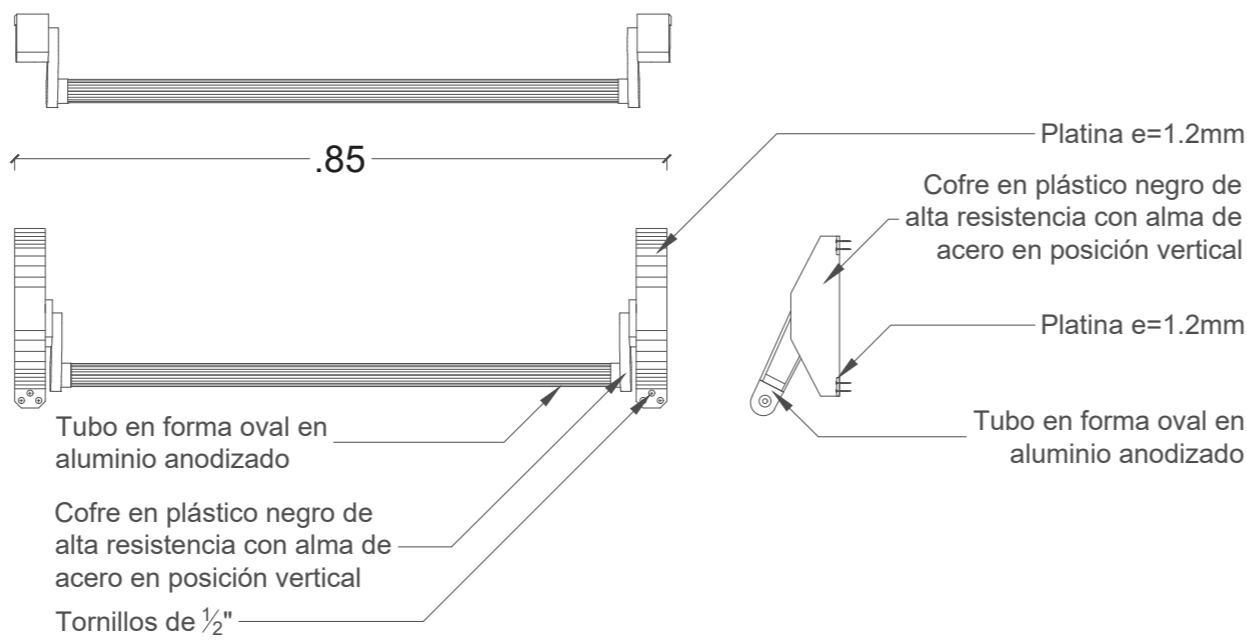
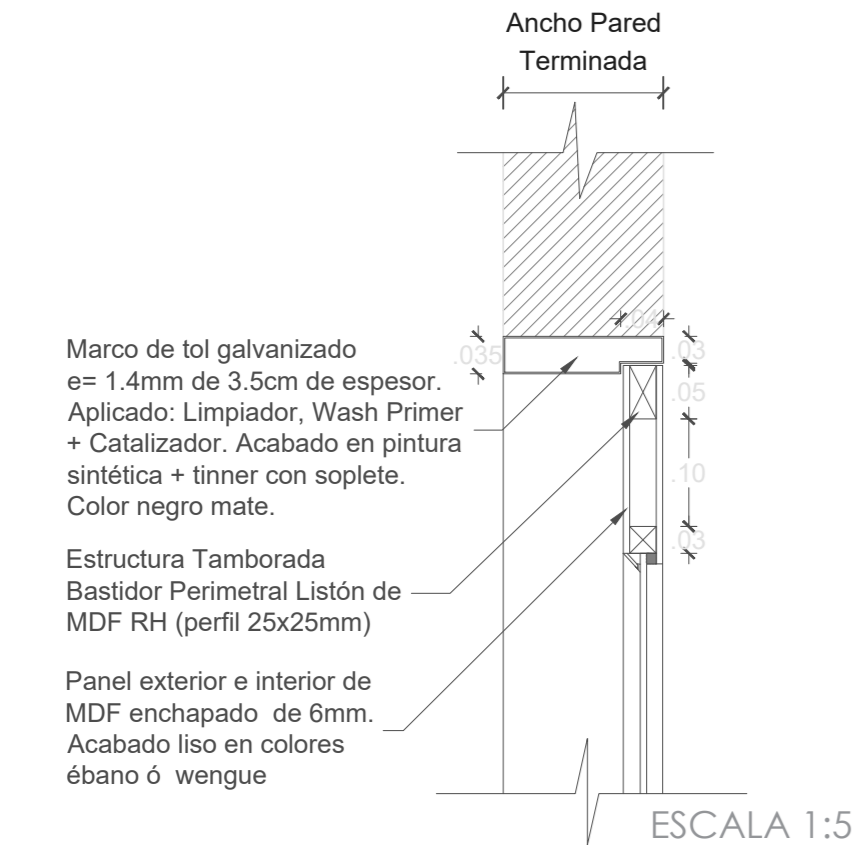
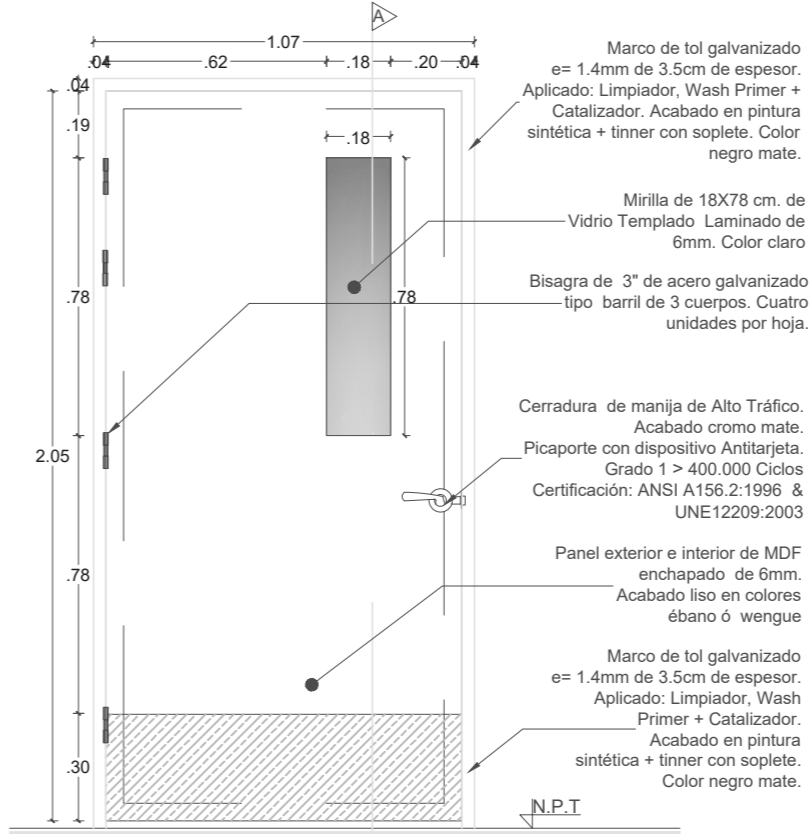
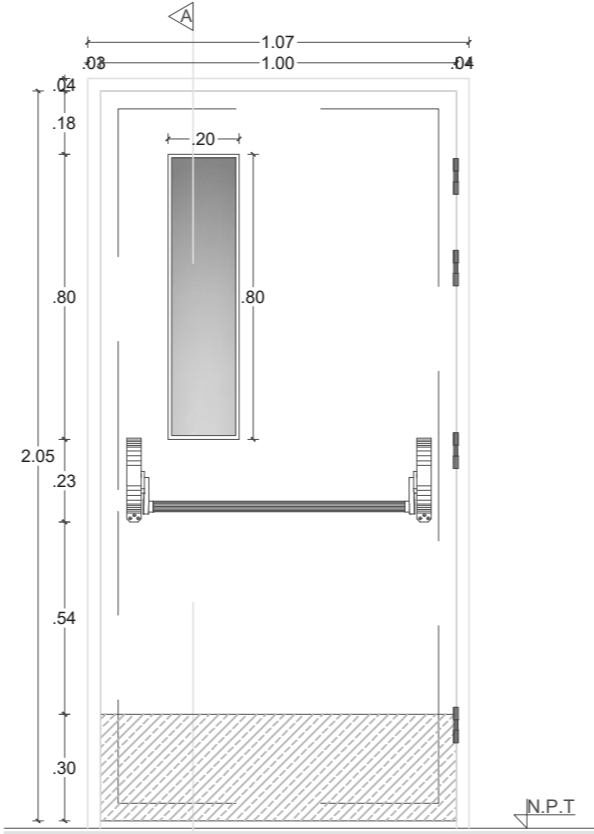
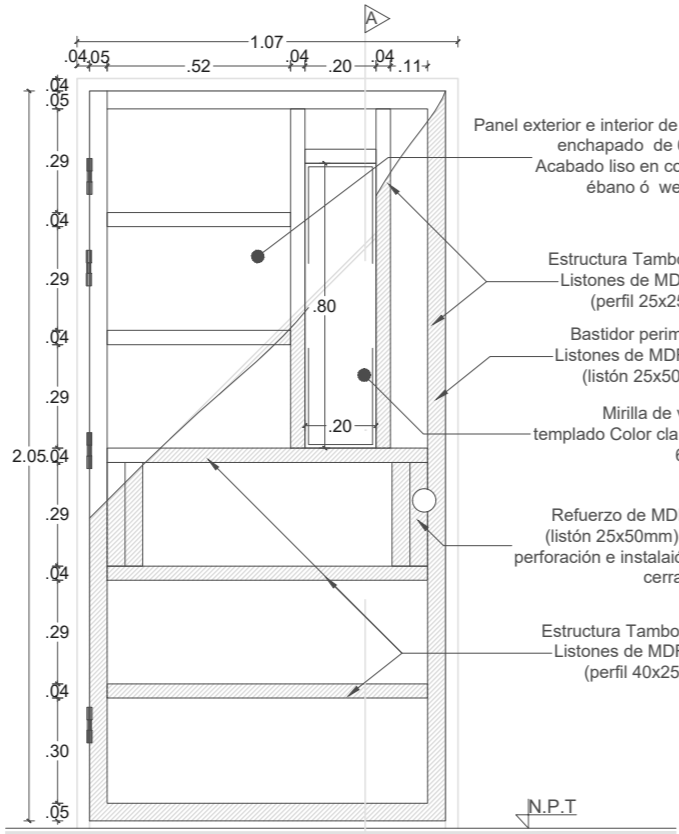
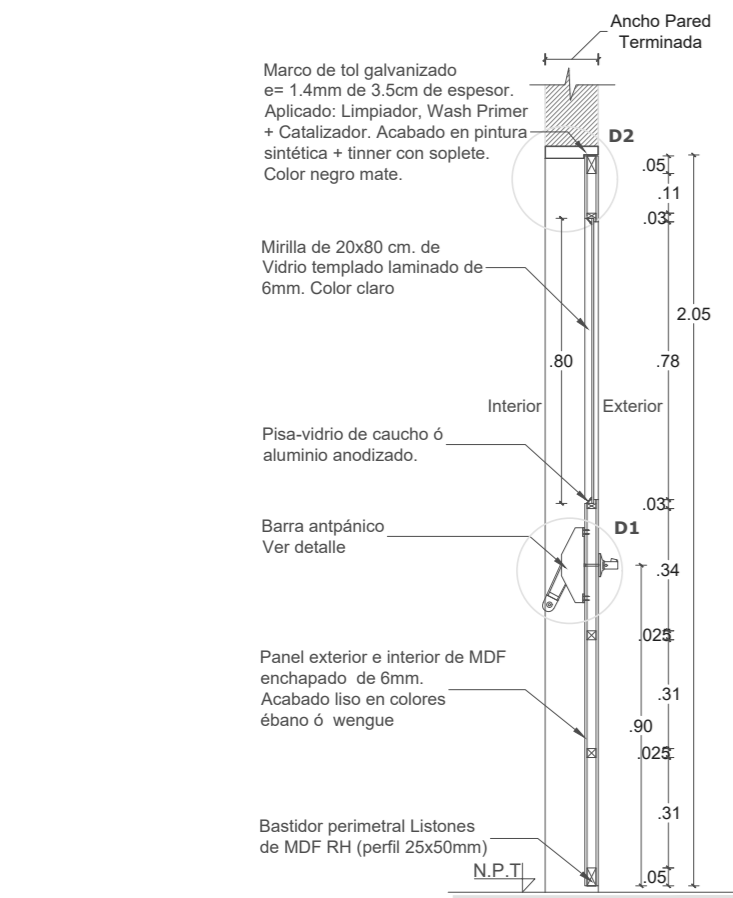
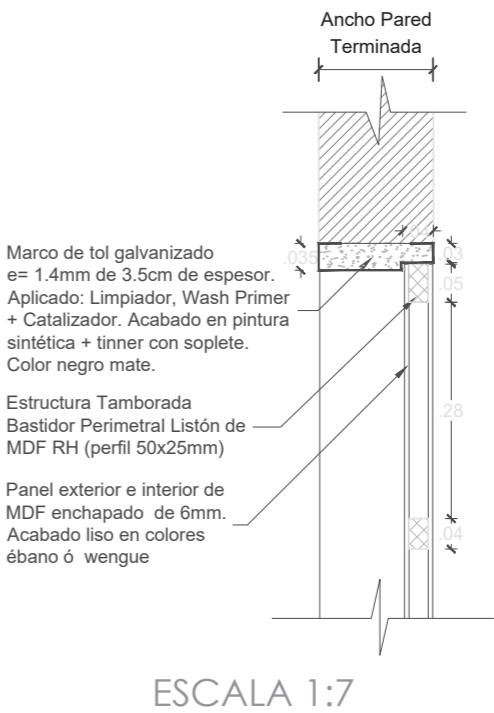
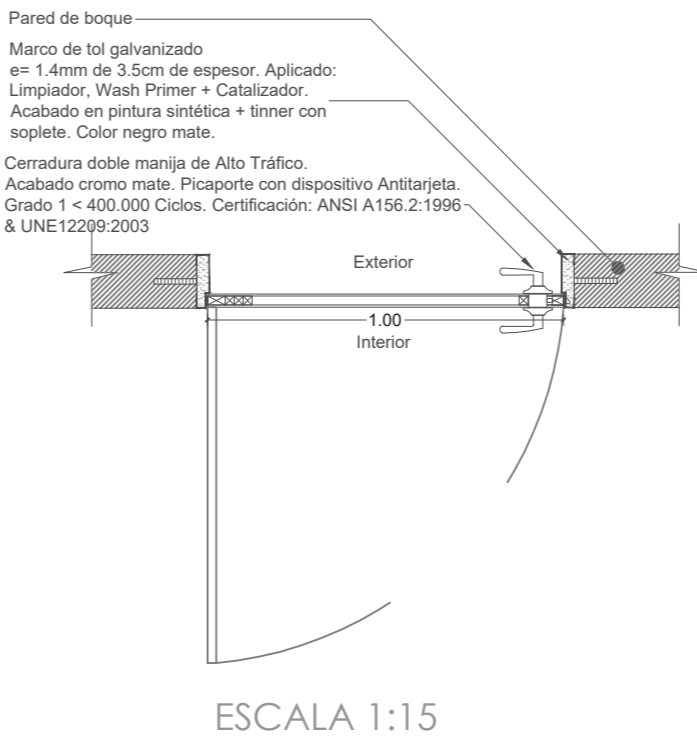
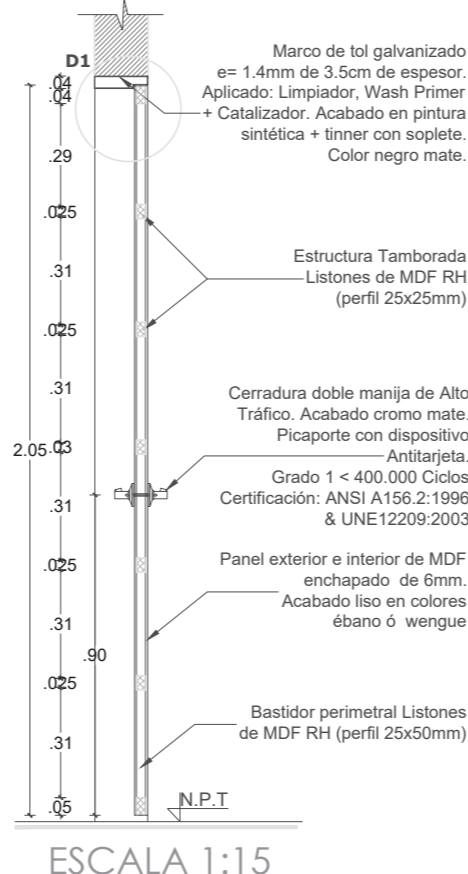
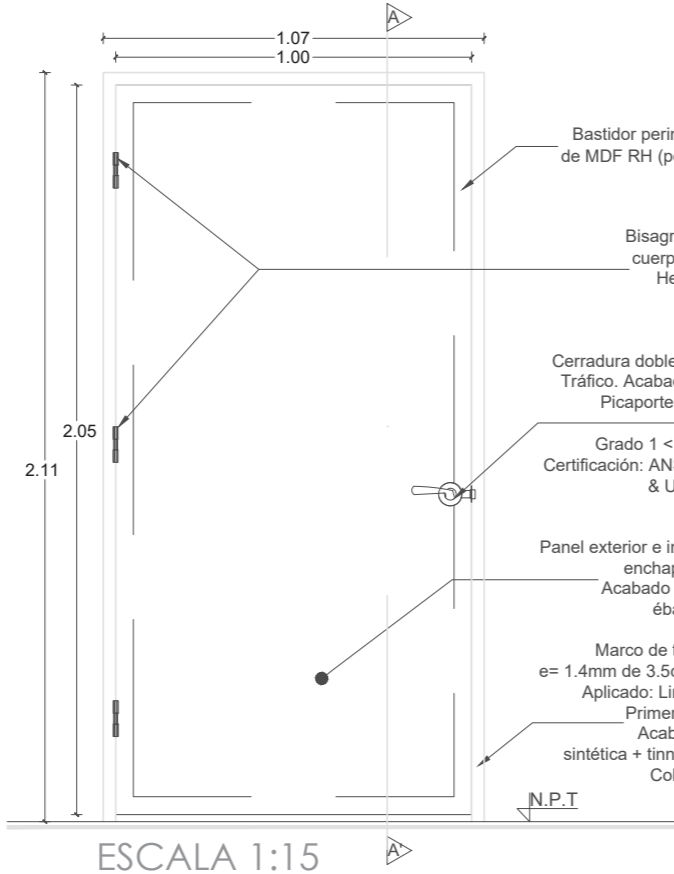
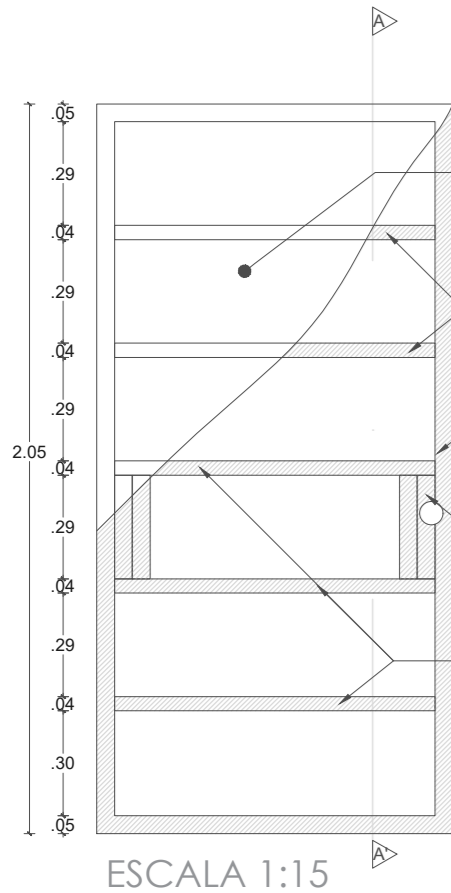


BLOQUES DE 12 AULAS A-B

PUERTAS ALISTONADAS AULAS



PUERTAS 1.00/0.90 ALISTONADAS



ING. JULIO CÉSAR ZAMBRANO ZAMBRANO
DIRECTOR SUBROGANTE DE TRANSPORTE Y OBRAS PÚBLICAS
DISTRITAL DE MANABÍ

ARQ. JUAN PABLO VILLAFUERTE
DIRECTOR NACIONAL DE INFRAESTRUCTURA FÍSICA



PROYECTO:
"UNIDAD EDUCATIVA ESTANDARIZADA DEL MILENIO "
CAMPOZANO

UBICACIÓN:
MANABÍ PROVINCIA PAJAN CANTÓN CAMPOZANO PARROQUIA

TIPOLOGÍA:
MAYOR

CONTIENE:
BLOQUES DE 12 AULAS A-B
DETALLES

ESCALA: INDICADAS FECHA: DICIEMBRE 2022 LÁMINA N.º AR-45

DIBUJADO POR: ING. ALEJANDRA CRUZ ELABORADO POR: ARQ. KAMILA RODRIGUEZ

SELLOS MUNICIPALES: